



# MLTC-40 BURRITOS PRESS

OPERATION'S MANUAL



The total or partial reproduction of this manual  
is prohibited by any means, whether printed or electronic;  
without the prior, express and written authorization of the author.

# **MLTC-40 BURRITOS PRESS**

OPERATION'S MANUAL

---

**INDEX**

GENERAL SAFETY INSTRUCTIONS .....	4
CAUTION .....	5
GAS AND ELECTRICAL INSTALLATION .....	6
COMPONENTS .....	7
OPERATING INSTRUCTIONS .....	8
CLEANING AND MAINTENANCE.....	10

## GENERAL SAFETY INSTRUCTIONS

**WARNING:** To reduce the risk of injury, read all instructions properly. Failure to follow the instructions listed below can cause electric shock, fire, serious injuries, mutilation and/or damage to the equipment.

### A. SAFETY IN THE WORK AREA.

- \* Keep the work area clean and lit. Crowded or dark areas lead to accidents.
- \* Do not operate the equipment without first checking all gas connections with soapy water, to ensure that there are no leaks that could cause an explosion.
- \* Keep children, customers and non-company personnel away from the electrical and mechanical operation area of the equipment.
- \* It is recommended to have a minimum space of one meter or three feet around the machine for safety measure and to optimize work.

### B. ELECTRICAL SAFETY.

- \* Machinery connections must be adapted to the power outlets.
- \* Do not use adapters for the switches: since you run the risk of receiving an electric shock.
- \* Do not expose the switches and / or electrical connections to rain or humidity. If water enters these elements, there is a risk that they will break down or suffer an electric shock.
- \* Use cable in a single piece, if there are joints in the connections these can produce a short circuit.
- \* Do not expose cables or electrical connections to heat, oil, sharp edges, or moving parts, as damaged cables can cause electric shock or short circuit.

### C. PERSONAL SAFETY

- \* Do not operate the equipment if you are tired, under the influence of alcohol or drugs.
- \* Wear appropriate clothing, do not wear loose clothing, or necklaces, earrings, watches, if you have long hair wear a tie to keep it up.
- \* Do not climb on the structure of the machine for any reason, falls or injuries may occur.
- \* Avoid using headphones, cell phones or any other equipment that works as a distraction to the operator.
- \* Make correct use of personal protective equipment if any maintenance is to be carried out on the machine.
- \* If any change is made to the model or component of the equipment, be it electrical, mechanical or gas related, it must be de-energized, cut off the gas supply and stop the machine completely to avoid accidents.
- \* Keep limbs away from all moving parts.

# MLTC-40 BURRITOS PRESS

OPERATION'S MANUAL

## CAUTION

The following symbols indicate the safety measures that must be taken before and after starting up the equipment.



**HOT HAZARD** Some parts of the machine are hot while in operation.



**ELECTRICAL RISK** In which you can suffer electric shocks, if you do not comply with the electrical safety provisions.



**GEAR RISK** Keep your hands away from the chains and gears of the machine.



**DO NOT COVER THE BARREL'S AIR INTAKE.** Keep your hands away from the air inlet of the barrel.



**CRUSHING HAZARD** Keep hands away from the cam press when be in operation.

# MLTC-40 BURRITOS PRESS

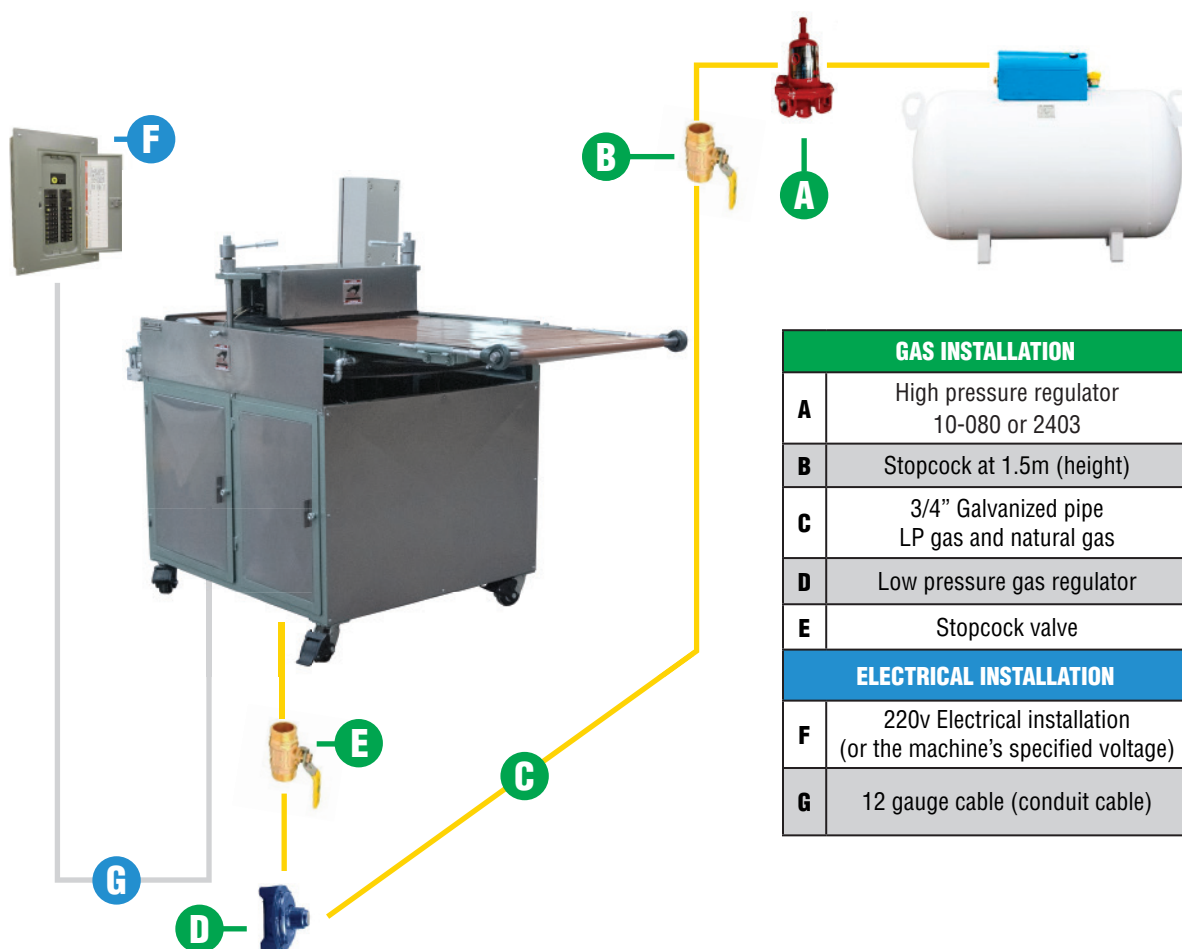
OPERATION'S MANUAL

## GAS AND ELECTRICAL INSTALLATION

A model 10-080 high pressure regulator must be installed at the gas tank outlet, with a pressure gauge (0-7 Kg.) in order to verify the correct supply pressure. The pipe used for the connection is 3/4" thick. diameter either type L copper or 40 gauge black tubing.

The length of the pipe must not exceed 10 meters, from the outlet of the gas tank. A union nut must be installed between the stopcock and the low pressure regulator. Before the machine, a low pressure regulator must be installed.

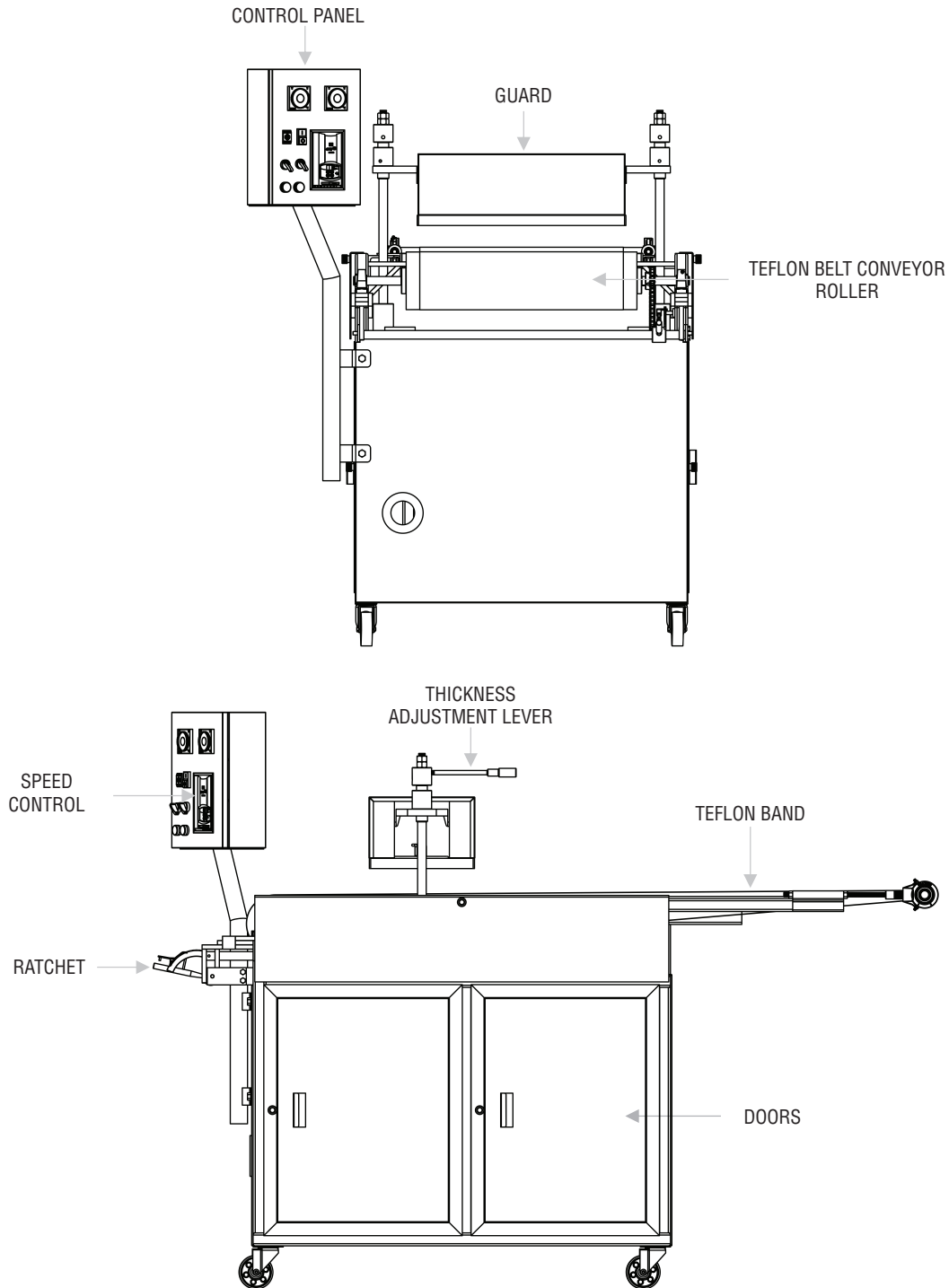
Check that the electrical connection is 220v. No short circuits, no loose or bare wires.



# MLTC-40 BURRITOS PRESS

OPERATION'S MANUAL

## COMPONENTS



# MLTC-40 BURRITOS PRESS

## OPERATION'S MANUAL



- 1** | Connect machine to electrical outlet and gas outlet



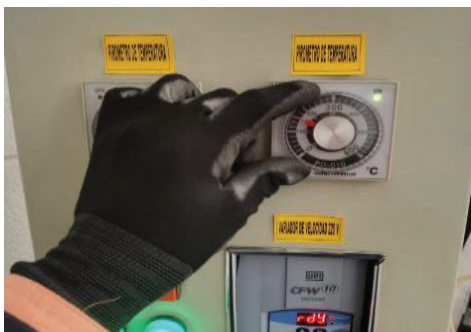
- 2** | Turn temperature control knob #1 top plate (ON)



- 3** | Turn temperature control pyrometer #1 to 100°C for 10 minutes. Then rise to 160°C



- 4** | Turn temperature control knob #2 top plate (ON)



- 5** | Turn temperature control pyrometer #2 to 100°C for 10 minutes. Then raise to 160°C.



- 6** | Press the ON button (green) of the variable speed drive to turn on the main motor.



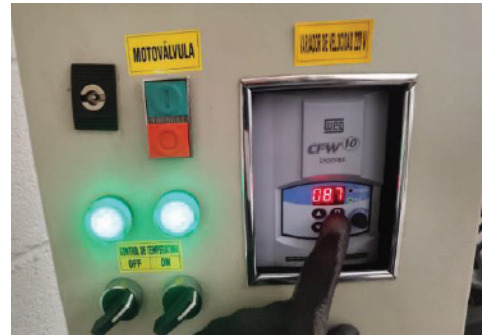
# MLTC-40 BURRITOS PRESS

## OPERATION'S MANUAL



7

Modify working speed by turning the knob clockwise (ascending) and counterclockwise (descending)



8

**DO NOT PRESS THE PARAMETERS BUTTON (P) AS IT WILL DEPROGRAM THE DRIVE**



9

Activate valve motor button



10

Turn on nozzles with a lighter



11

The nozzles will ignite

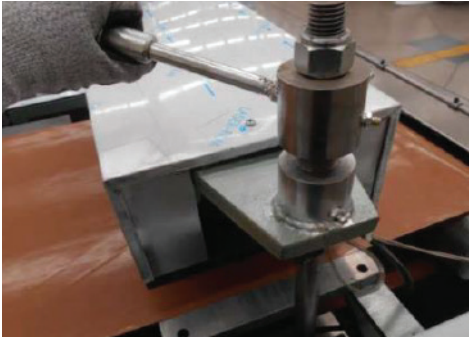


12

Regulate carburation with carburetor valve knobs

# MLTC-40 BURRITOS PRESS

## OPERATION'S MANUAL



- 13** Regulate dough thickness: turn the two levers to regulate the size of the tortilla.



- 14** Regulate the uniformity of the tortilla by turning the inner locknut until it is level.



- 15** Take the dough



- 16** Place dough on conveyor belt



- 17** Check shape thickness and roundness



- 18** Start production

# MLTC-40 BURRITOS PRESS

OPERATION'S MANUAL

## CLEANING PROCEDURE

**WARNING:** The cleaning of the MLTC 40 Burrito Press must be carried out with the machine totally stopped and de-energized to avoid accidents such as crushing or electric shock.

## MLTC-40 BURRITO PRESS CLEANING

1. Remove excess dough from the upper plate
2. Clean the plate with water, moistening a cloth and gently wiping over the plate.
3. Carry out this action until the plate is without any residue of flour or dough.
4. Clean side control panel, motor plates and button panels.
5. Clean Teflon band with a damp cloth.

## MAINTENANCE

Clean the machine before and after using it.

The duration of the spare parts depends on the preventive maintenance and care given to the machinery. The more frequent this maintenance is done, the parts will have a longer life.

## LUBRICATION

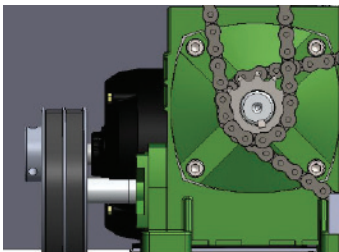
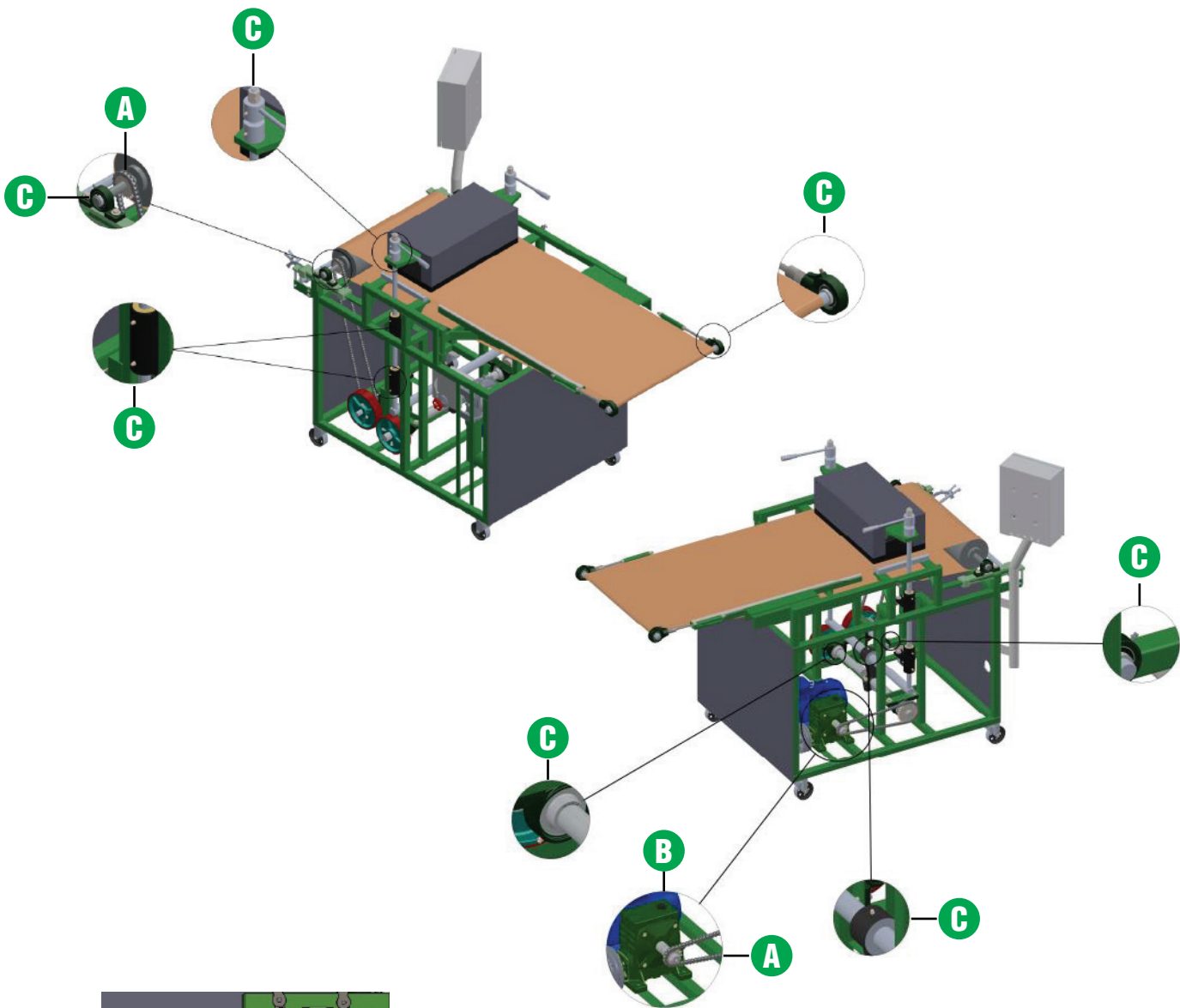
The following table shows the parts, the type of lubricant and the frequency with which the machines and their parts must be lubricated.

PART	LUBRICANT	PERIOD
Chain	SAE 250	3 times per week
Rowlock	BAT 3 Grease	Every 3 days
Gears	SAE 250	Every week
Speeder	SAE 250 or 80/90 mineral oil	Every 3 months

# MLTC-40 BURRITOS PRESS

OPERATION'S MANUAL

The following figures show the schematic location of the parts that require lubrication.



It is recommended to change the oil every three months. The used oil must be drained and 400 ml of new SAE 250 oil must be poured.

The following table shows the type of lubricant to put in all parts of the machine.

LUBRICANT
A) SAE 250 Oil
B) SAE 250 or 80/90 mineral oil
C) BAT 3 Grease





## **HEADQUARTERS**

AV. INDUSTRIAS #3655, ZONA INDUSTRIAL  
CP 78395 SAN LUIS POTOSÍ, SLP. MÉXICO



444 127 11 80



444 129 29 79

[info@manufacturaslenin.mx](mailto:info@manufacturaslenin.mx)

[MEXICANTORTILLAMACHINE.COM](http://MEXICANTORTILLAMACHINE.COM)